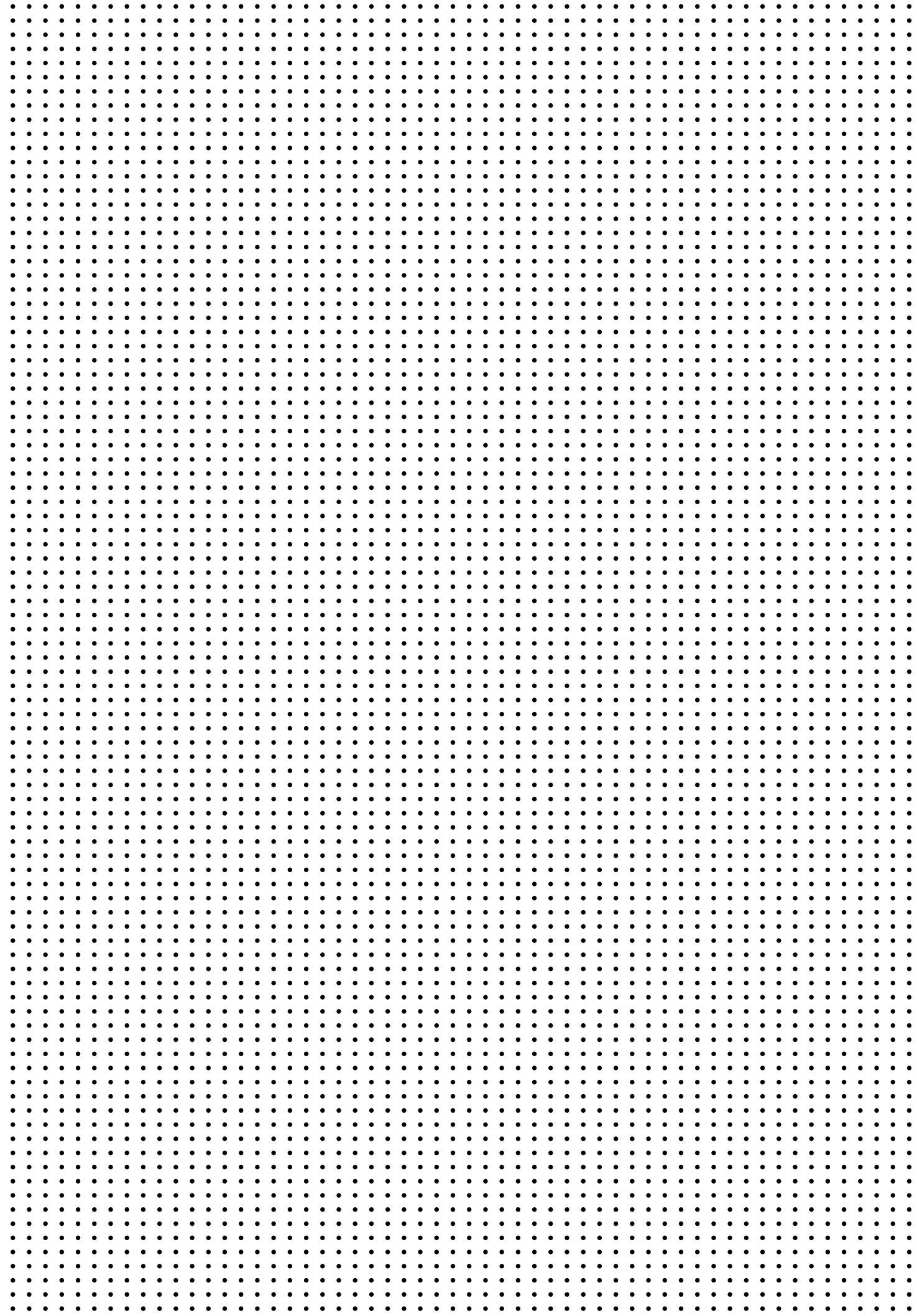




SOPPEC
CONSTRUCTION

Technima





The TECHNIMA GROUP manufactures and sells under its own label, SOPPEC CONSTRUCTION, a wide range of products designed for professionals working in the building and public works industry.

SOPPEC CONSTRUCTION has a strong reputation and offers a wide choice of fluorescent and non-fluorescent aerosol paints purpose-designed for the marking out, identification or signage frequently required in the world of civil engineering and construction.

Other products and accessories have been added to complete the range and facilitate the smooth-running of both structural works and second fix operations.

.....	
SPRAY PAINTS & MARKING ACCESSORIES	4
FLUO TP	6
PRO MARKER	8
S MARK FLUO	10
S MARK NON FLUO	12
HYDRO TP	14
TEMPO TP	16
IDEAL SPRAY	18
TEMPO MARKER	20
MARKING ACCESSORIES	22
ONE-WHEEL APPLICATOR	22
GUN HANDLE	24
CONSTRUCTION SITE PRODUCTS	25
MASKER SIGN	26
PROTECT MARK	27
CHALK LINES	28
MARKING POWDER	28
WARNING TAPE	29
MARKING CHALK	30
PAINT VALVE PEN	31
AÉROBITUME	32
COLD-LAY ASPHALT	33
COMMON USES	34
.....	



SPRAY PAINTS & MARKING ACCESSORIES

.....

**Considered a benchmark in the building and public works industry for over 15 years,
SOPPEC CONSTRUCTION worksite paint markers were the first to be fitted
with patented safety caps
to guarantee flawless reliability for users.**

With seven different product ranges, TECHNIMA is able to meet the needs of the building
and public works industry and the diversity of marking applications encountered:
**short-term and temporary marking, fluorescent, non-fluorescent,
more environmentally-friendly
(with a formula containing over 25% water).**

.....

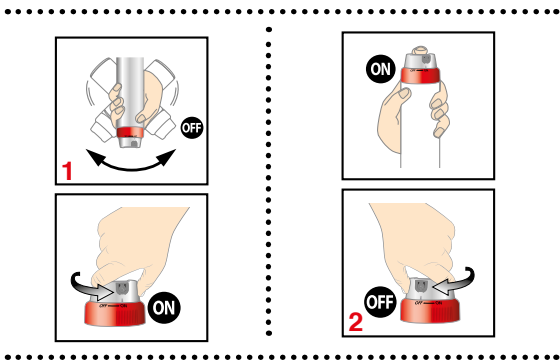
SAFETY AND THE ENVIRONMENT - OUR PRINCIPAL PRIORITIES

- Our products are designed without CMR compounds (carcinogenic, mutagenic and reprotoxic...)
- Without Hexan et Methanol, Toluen et Xylen
- Without heavy metals such as Lead (PB), Cadmium (Cd), ...
- Without Environmental Hazard statement n° 412 : "toxic to aquatic organisms long-term damage to the ecosystem"
- Our labels are in compliance with EU regulation n°1272/2008 and with its adaptation

ADVANTAGES

Two purpose-designed safety caps are fitted to the construction and public works aerosol paint ranges:

- The TP cap patented by the SOPPEC brand and developed by TECHNIMA teams, with a base made from recycled plastic, for aerosols used head down: FLUO TP®, PROMARKER®, S MARK, HYDRO TP and TEMPO.
- A second specific cap for IDEAL SPRAY® (multi-directional use).
- The formulations for all aerosols comply with our triple certification rules.
- Products can be used even under very low temperatures, thanks to our high pressure cans and specific propellant gas.



QSE CERTIFIED MANAGEMENT SYSTEM

Our integrated QSE management system is based on three ISO 9001 certifications for Quality, ISO 14001 for the Environment

and OHSAS 18001 for Health and Safety. Within these three complementary fields, TECHNIMA's own approach is based on risk analysis and prevention, continuous performance improvement, regulatory compliance and customer satisfaction. Since 2004, our triple certification has been successfully renewed every 3 years.

STORAGE & HANDLING

Aerosols should be stored at a temperature of between 15°C and 25°C and between 50% and 60% relative humidity.

Storage time before use, if stored correctly as above:

Solvent based markers: 4 years

water based markers: 2 years

Do not expose to temperatures above 50°C.

Keep away from sources of ignition, heat and sunlight.

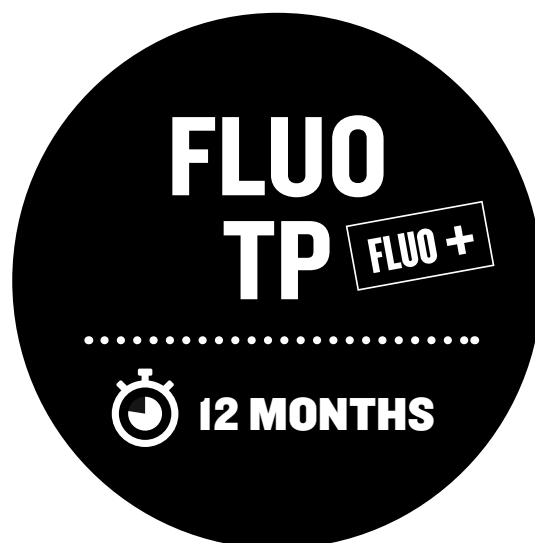
As with all handling and storage operations, NO SMOKING is very strongly recommended.

PACKAGING INFORMATION

All our aerosols contain 650 ml gross volume for a net volume of 500 ml.

They are delivered on film-wrapped palettes of 75 boxes, each box containing 12 aerosols.





HIGHLY FLUORESCENT WORKSITE MARKING PAINT [12 MONTHS]

FLUO TP is designed to meet the very highest demands for marking visibility and longevity. It is particularly appreciated by land-surveyors for setting-out and identification, but is also used in a wide range of other domains such as roadworks, earthworks, pipework and the general construction field.

FLUO TP is the most fluorescent marking spray on the market and offers the highest visibility thanks to its new formula (2016) with an even higher density of fluorescent pigments. Easy and safe to use, FLUO TP is fitted with The TP cap patented by the SOPPEC brand and developed by TECHNIMA teams.





PROPERTIES

.....

- Usable on a very wide range of surfaces, such as: concrete, asphalt, grass, gravel, sand, stone and wood.
- A particularly robust safety cap (a full aerosol dropped from a height of 1.50m will remain intact).
- Rapid drying: approximately 10 min.
- Very long life and covering capacity: 1 aerosol applied using the the SOPPEC brand one wheel applicator and developed by TECHNIMA teams is sufficient to mark a durable line 80 m long and 2 cm wide.
- High longevity, including on wet surfaces, of up to 12 months (depending on the surface, the application conditions and the UV exposure).
- Temperature range: -15°C to 40°C (operates down to -15°C).

SPECIFICATIONS

.....

Composition

Binder: thermoplastic acrylic.
Pigments: mineral and organic, free from heavy metals.
Solvents: mixture of aliphatic hydrocarbons and esters (no chlorinated solvents or aromatic compounds).
Propellant: specific blend of isobutane and propane.

Application method

Manually or using our purpose-designed application equipment (One-wheel applicator & gun handle see pages 20 and 21).
BEFORE USE: shake vigorously head down.
AFTER USE: purge head up.

Health and safety

Safety data sheets are available free of charge on the internet: www.quick-fds.com.
No dripping or paint mist during use thanks to the safety cap patented by the SOPPEC brand and developed by TECHNIMA.
CLP labelling with a single pictogram.



PRO MARKER

12 MONTHS

NON-FLUORESCENT WORKSITE MARKING PAINT [12 months]

PROMARKER complements the range of fluorescent paint markers and can be used for many different marking/identification purposes: roads and highways, road signage, earthworks, pipework, building works and electrical installations. With excellent covering power it masks other markings easily and effectively. Easy and safe to use, the PROMARKER is fitted with the safety cap patented by the SOPPEC brand and developed by the TECHNIMA team, a largest size is available (750ml net).

WHITE
141500

YELLOW
141502

BLACK
141503

RED
141504

GREY
141507

BROWN
141509



IN 750 ML

WHITE
142500

BLUE
142501

YELLOW
142502

BLACK
142503

RED
142504

GREEN
142505

ORANGE
142506





PROPERTIES

.....

- Excellent adhesion to many different types of surface (even wet): concrete, asphalt, sand, wood, grass, etc.
- A particularly robust safety cap (a full aerosol dropped from a height of 1.50m will remain intact).
- Rapid drying: approximately 10 min.
- Particularly good covering power:
- Marking duration: over 12 months (depending on the application conditions and surface), high resistance to weathering and UV rays.
- Temperature range: -15°C to 40°C (operates down to -15°C).
- Wide range of colors including white and brown.

SPECIFICATIONS

.....

Composition

Binder: thermoplastic acrylic.

Pigments: mineral and organic, free from heavy metals (lead, cadmium).

Solvents: mixture of aliphatic hydrocarbons and esters (no chlorinated solvents or aromatic compounds).

Propellant: specific blend of isobutane and propane.

Application method

Manually or using our purpose-designed application equipment
(One-wheel applicator & gun handle see pages 20 & 21).

BEFORE USE: shake vigorously head down.

AFTER USE: purge head up.

Health and safety

Safety data sheets are available free of charge on the internet: www.quick-fds.com.

No paint mist or drips during use thanks to the safety cap patented by the SOPPEC brand and developed by TECHNIMA.

CLP labelling with a single pictogram.





FLUORESCENT WORKSITE MARKING PAINT [6 months]

S MARK FLUO is used for everyday ground marking and identification work in the following areas: roadworks, earthworks, piping, buildings, electrical installations and identifying underground utilities.
Easy to use, S MARK FLUO is now fitted with the “TP” cap in the same colour as the paint.

WHITE	RED	ORANGE	YELLOW	GREEN	BLUE	CHERRY	PURPLE
141900	141913	141916	141917	141918	141919	141925	141920





PROPERTIES

.....

- Usable on a very wide range of surfaces, such as: concrete, asphalt, grass, gravel, sand, stone and wood.
- A particularly robust safety cap (a full aerosol dropped from a height of 1.50m will remain intact).
- Rapid drying: approximately 10 min.
- Excellent coverage over a large surface area: 1 aerosol is sufficient to paint a line 55 m long and 2 cm wide using the Soppec One-wheel applicator developed by the TECHNIMA teams.
- Good marking duration even on wet surfaces: up to 6 months for fluorescent paint, depending on application conditions, surface and UV exposure.
- S MARK non-fluorescent marking may last even longer.
- Temperature range: -15°C to 40°C (operates down to -15°C).

SPECIFICATIONS

.....

Composition

Binder: thermoplastic acrylic.
Pigments: mineral and organic, free from heavy metals (lead, cadmium).
Solvents: mixture of aliphatic hydrocarbons and esters (no chlorinated solvents or aromatic compounds).
Propellant: specific blend of isobutane and propane.

Application method

Manually or using our purpose-designed application equipment
(One-wheel applicator & gun handle see pages 20 &21).
BEFORE USE: shake vigorously head down.
AFTER USE: purge head up.

Health and safety

Safety data sheets are available free of charge on the internet: www.quick-fds.com.
No paint mist or drips during use thanks to the safety cap patented by the SOPPEC brand and developed by TECHNIMA.
CLP labelling with two pictograms.



S MARK NON FLUO



6 MONTHS

NON FLUORESCENT WORKSITE MARKING PAINT [6 MONTHS]

S MARK NON FLUO is used as a complement to S MARK FLUO for everyday marking and identification that require neither long distance high visibility nor a marking duration greater than six months.

It is also perfectly adapted for covering previous marking in black.
Also fitted with the Soppec "TP" safety cap developed by the TECHNIMA teams,
, it is both reliable and easy to use.

YELLOW
141902



BLACK
141903



RED
141904



BROWN
141909





PROPERTIES

.....

- Can be used on many different types of surface (even wet): concrete, sand, gravel, asphalt, wood and grass.
- The safety cap is particularly robust (a full aerosol dropped from a height of 1.50 m remains intact).
- Rapid drying: approx 10 min.
- Marking duration of approximately 6 months depending on the conditions of application and the surface to which it is applied.
- Temperature range: -15°C to 40°C (operates down to -15°C).
- Range of 6 colours that complement the S MARK FLUO fluorescent colour range.

SPECIFICATIONS

.....

Composition

Binder: thermoplastic acrylic.

Pigments: minerals and organics free of heavy metals (lead, cadmium).

Solvents: mixture of aliphatic hydrocarbons and esters (no chlorinated solvents or aromatic compounds).

Propellant: specific blend of isobutane and propane.

Application method

Manually or using our marking accessories (One-wheel applicator & gun handle).

Before use: shake thoroughly head down.

After use: purge head up.

Health and safety

Safety data sheets are available on the internet free of charge: www.quick-fds.com.

No paint mist or drips during use thanks to the safety cap patented by the SOPPEC brand and developed by TECHNIMA.

CLP labelling with a single pictogram.



HYDRO TP **FLUO**



6 MONTHS



WORKSITE MARKING PAINT AQUEOUS PHASE [6 MONTHS]

Formulated with over 25% water for the florescent paints, HYDRO TP is not only more environmentally-friendly but is better for the health and safety of all those exposed to the paint.

And, of course, HYDRO TP offers excellent performance for marking and identification purposes.

It is widely used in the following fields: road and highway works, earthworks, pipelines, construction and electrical installations.

HYDRO TP is fitted with the TP safety cap patented by the SOPPEC brand and developed by TECHNIMA teams.

RED
142213

FLUO



ORANGE
142216

FLUO



BLUE
142219

FLUO



CHERRY
142225

FLUO





PROPERTIES

- High visibility, including from a distance, thanks to its fluorescent formulation.
- Can be used on a wide range of different types of surface, even when wet, such as: concrete, asphalt, sand and gravel.
- A particularly robust safety cap (a full aerosol dropped from a height of 1.50m will remain intact).
- Rapid drying: approximately 10 min.
- Long marking duration: at least 6 months, depending on the application conditions, the surface and UV exposure levels.
- Temperature range: +5°C to 50°C, humidity level <85%.
- HYDRO TP paint only attains its optimal performance when completely dry. It remains vulnerable to moisture or water (rain, etc) until completely dry.

SPECIFICATIONS

Composition

Binder: emulsion polymer.

Water: between 25% and 28% depending on the fluorescent colors.

Solvent: mixture of water and alcohols free of chlorinated solvents and aromatics.

Propellant: dimethyl ether.

Pigments: mineral and organic, free from heavy metals (lead, cadmium).

Application method

Manually or using our purpose-designed application equipment (One-wheel applicator & gun handle see pages 23-24).

BEFORE USE: shake vigorously head down.

AFTER USE: purge head up.

Health and safety

Safety data sheets are available free of charge on the internet: www.quick-fds.com.

No paint mist or drips during use thanks to the safety cap patented by the SOPPEC brand and developed by TECHNIMA.

CLP labelling with two pictograms.





TEMPORARY FLUORESCENT MARKING PAINT
[2 MONTHS]

.....

TEMPO TP is used for short-term road marking (2 to 8 weeks). Thanks to a paint formula specially designed to facilitate the elimination of the color, it is particularly well-adapted for temporary marking or identification purposes in urban areas or for listed or otherwise “protected” sites. Easy and safe to use, TEMPO TP is fitted with the SOPPEC safety cap developed by TECHNIMA teams.





PROPERTIES

.....

- Very good adhesion to surfaces such as concrete, asphalt, grass, wood, sand, etc.
- A particularly robust safety cap (a full aerosol dropped from a height of 1.50m will remain intact).
- Highly fluorescent, visible from a distance.
- Marking duration: up to 2 months maximum.
- Rapid drying: approximately 10 min.
- Temperature range: -15°C to 40°C (operates down to -15°C).
- Removal facilitated by mechanical action (water jet, low pressure cleaner, brushing, etc).

SPECIFICATIONS

.....

Composition

Binder: complex blend of mineral oils and clays.

Pigments: minerals and organics free of heavy metals (lead, cadmium).

Solvents: mixture of aliphatic hydrocarbons and esters (no chlorinated solvents or aromatic compounds).

Propellant: specific blend of isobutane and propane.

Application method

Manually or using our purpose-designed application equipment (One-wheel applicator & gun handle see pages 23-24).

BEFORE USE: shake vigorously head down.

AFTER USE: purge head up.

Health and safety

Safety data sheets are available free of charge on the internet: www.quick-fds.com.

No paint mist or drips during use thanks to the safety cap patented by the SOPPEC brand and developed by TECHNIMA.

CLP labelling with two pictograms.





MULTIDIRECTIONAL FLUORESCENT MARKING PAINT [12 months]

.....

With its multi-directional 360° valve IDEAL SPRAY is recommended when paint marking and identification needs to be applied in different directions: earthworks and landscaping, marking in sewers, mines and tunnels, for second fix work on any horizontal or vertical surface.





PROPERTIES

.....

- Excellent adhesion to many different types of surface (even when wet): concrete, asphalt, grass, wood, etc.
- Rapid drying: approximately 10 min.
- High visibility even from a distance thanks to its strongly fluorescent formula.
- Aerosol cap the same color as the paint.
- Marking duration: 12 months, depending on the application conditions and surface.
- Temperature range: -15°C to 40°C (operates down to -15°C).

SPECIFICATIONS

.....

Composition

Binder: thermoplastic acrylic.

Pigments: minerals and organics free of heavy metals (lead, cadmium).

Solvents: mixture of aliphatic hydrocarbons and esters (no chlorinated solvents or aromatic compounds).

Propellant: specific blend of isobutane and propane.

Application method

Manually.

BEFORE USE: shake vigorously

DO NOT PURGE

Recommendations for use

- Do not purge (multi-directional).
- Can be used head-up and head-down, apply no more than 10 cm from the surface to ensure clear and precise marking.

Health and safety

Safety data sheets are available free of charge on the internet: www.quick-fds.com.

No paint mist or drips during use thanks to the safety cap patented by the SOPPEC brand and developed by TECHNIMA.

CLP labelling with one pictogram.





Chalk-based temporary fluorescent marker [1 MONTH]

Useful when signage and marking-out is only required for a very short time.

With its specific chalk-based formula the colour is rapidly eliminated through natural UV exposure.

This can be accelerated by mechanical action (brushing, water jet, low pressure cleaner, etc) to ensure the complete removal of the marking.

ORANGE **FLUO**
141716

BLUE **FLUO**
141719

CHERRY **FLUO**
141725





PROPERTIES

.....

Can be used on many different surfaces: concrete, grass, wood and asphalt.

A particularly robust safety cap (no rupture if a full aerosol is dropped from a height of 1.50m).

- Highly fluorescent, visible from a distance.
- Marking duration: from a few days to 1 month maximum
- Rapid drying: approximately 10 min.
- Temperature range: -15°C to 40°C (operates down to -15°C).
- Natural elimination of the colour completed by mechanical action (water jet, low pressure cleaner, brushing, etc).

SPECIFICATIONS

.....

Composition

Binder: clays.

Pigments: minerals and organics free of heavy metals (lead, cadmium) specifically selected to facilitate rapid degradation due to UV exposure.

Solvents: mixture of aliphatic hydrocarbons and esters (no chlorinated solvents or aromatic compounds).

Propellant: specific blend of isobutane and propane.

Application method

Manually or using our marking accessories (One-wheel applicator & hand gun).

Before use: shake vigorously head down.

After use: purge head up.

Health and safety

Safety data sheets are available free of charge on the internet: www.quick-fds.com.

No paint mist or drips during use thanks to the safety cap patented by the SOPPEC brand and developed by TECHNIMA.

CLP labelling with two hazard pictograms.



MARKING SPRAY ACCESSORIES

Designed to facilitate the work of professionals in a wide range of fields and avoid postures susceptible to cause musculoskeletal disorders, TECHNIMA has developed a range of marking accessories for all the aerosols in the SOPPEC CONSTRUCTION range.



ONE-WHEEL APPLICATOR

The One wheel applicator of the SOPPEC brand and developed by TECHNIMA teams responds to the needs of the most demanding professionals looking for efficient line marking.

PROPERTIES

- Flexible, lightweight and ergonomic thanks to the choice of the materials used and a design that focuses on user comfort.
- It can be personalised to your own brand (depending on quantities).
- Adaptable to suit all sizes of aerosols, it is an essential tool for any worksite.

1

Begin by preparing the aerosol for spraying: shake and open or remove cap.



2

Press on the arrow to move the slider back.



3

Position the bottom of the aerosol between the groove and the end stop.



4

Press on the arrow to move the slider forward and place the nozzle correctly in contact with the orange spray element.



5

Press the spray trigger.



6

Press the spray trigger.



GUN HANDLE

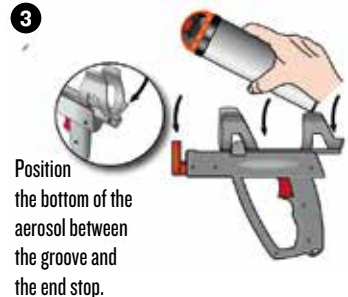
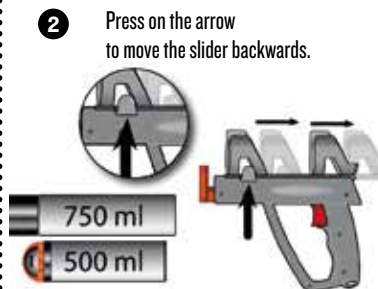
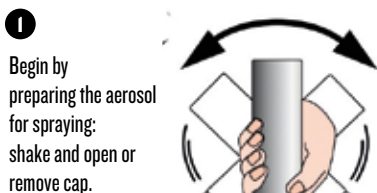
The plastic gun handle of the SOPPEC brand and developed by TECHNIMA teams is lightweight and purpose-designed for professional ground marking. Thanks to its design and materials, it will satisfy even the most demanding users.

PROPERTIES

Usable with different size of aerosols, customizable to your own brand. It is also the fundamental tool for marking with stencils.



REFERENCE
432447



CONSTRUCTION COMPLEMENTARY PRODUCTS

.....

Through its brand SOPPEC and to complete its range of aerosols markers, TECHNIMA offers a range of other products useful to all those working in the buildings and construction areas.

During a project it may be necessary to mask signs, mark out hazardous areas, prepare for line-marking work, carry out repairs or maintenance to asphalt. TECHNIMA's range of complementary products has all these essential needs covered.

MASKER SIGN'
PROTECT MARK
PAK DETECTOR
CHALK LINES
MARKING CHALK POWDERS
WARNING TAPE
LUMBER CRAYONS
PAINT VALVE PEN
BITUMEN SPRAY
COLD-LAY ASPHALT



MASKER SIGN'

TEMPORARY MASKING PAINT IN AN AEROSOL

MASKER SIGN' makes it easy to temporary mask any type of sign or sign support.

MASKER SIGN'® is a simple, clean, safe and reliable solution that offers an alternative to using "plastic bags" without the risk of being torn off.

REFERENCE 142107
GREY
500 ml NET



PROPERTIES

- Water and weather resistant.
- Excellent coverage: up to 5m² with a single aerosol.
- Can be quickly removed from smooth surfaces using a dry cloth.
- Rapid drying: 10 to 15 min.
- Temperature range: -15°C to 50°C.

SPECIFICATIONS

Composition

Binder: natural and synthetic waxes.
Pigments: minerals and organics free of heavy metals (lead, cadmium)

Solvents: mixture of aliphatic hydrocarbons and esters (no chlorinated solvents or aromatic compounds).
Propellant: specific blend of isobutane and propane.

Recommendations for use

- Use head up: shake vigorously before use.
After use: purge head down.
- For certain plastics and painted surfaces it is advisable to test beforehand.
- One can is sufficient to temporarily cover approximately 5 m².

Health and safety

Safety data sheets are available on the internet free of charge: www.quick-fds.com.
CLP labelling with two pictograms.



PROTECT MARK

PROTECTIVE VARNISH IN AN AEROSOL

PROTECT MARK does exactly that, it protects your chalk line or spray paint marking to ensure it remains clearly visible for even longer.

REFERENCE 142000
COLOURLESS
500ML NET



PROPERTIES

- Extends the duration of fluorescent marking thanks to a formulation that is resistant to both UV rays and mechanical aggression and wear.
- Colourless when applied.
- Drying time: 5 to 10 min.

SPECIFICATIONS

Composition

Binder: thermoplastic acrylic and wax.
Solvents: mixture of aliphatic hydrocarbons and esters (no chlorinated solvents or aromatic compounds).
Propellant: specific blend of isobutane and propane.

Health and safety

Safety data sheets are available on the internet free of charge www.quick-fds.com.
No paint mist or drips during use thanks to the safety cap patented by the SOPPEC brand and developed by TECHNIMA teams.
CLP labelling with two pictograms.



CHALK LINES

All building trades use chalk lines whenever a straight line needs to be drawn on the ground or wall to act as an indication line. TECHNIMA offers a complete range, purpose-designed to ensure that they meet the needs of: electricians, plumbers, carpenters, plasterers, builders, metal-workers, public building works, slab-layers, etc.

REFERENCE 421505



GIANT ORANGE 50M / 2,5MM

REFERENCE 421515



PRATIC CHALK LINE GREY/YELLOW

PACKAGING

Aluminium: in a cardboard pack to hang up.

Plastic: loose or in a cardboard pack to hang up, 1 bottle 100g chalk powder included.

“GEANT” CHALK LINE

Masonry, brickwork / Building & Public Works / Outdoor setting-out work

- ABS casing: comfortable easy grip.
- Wide steel crank with free crankpin for improved rewinding.
- Crank riveted onto the reel axis = extra strength.
- Line: 50 metres of 2.5 mm braided cotton (the line offers improved powder absorption and perfect release).
- Sliding refill shutter on the side.
- Long line length, ideal for marking out car parks for example.

“PRATIC” CHALK LINE

- Yellow braided cord, diameter 1.5 mm length 100 m.
- Wound onto a polypropylene holder.
- Detachable handle for insertion into a ranging pole.
- Easy to rewind using the lower handle and crank.
- Can be simply pushed into the ground, useful for all outdoor setting-out work.

MARKING POWDER

REFERENCE 421701
BOTTLE OF 400G BLUE



PROPERTIES

- High quality: excellent coverage
- Ideal for outside use

PACKAGING

400 g

WARNING TAPE

Warning tape to ensure safety on any building or worksite, or for marking-out events (races, hiking, event car parks).

**STANDARD
RED/WHITE
REFERENCE 45I7IIC**



**STANDARD
YELLOW/RED
REFERENCE 45I7OIC**



**UNTEARABLE
RED/WHITE
REFERENCE 45I7O4**



"STANDARD"

- Choice of two colours, red/white or yellow/red.
- Dimensions: 100 m x 50 mm.

"UNTEARABLE"

- Stronger than standard tape.
- Ideal for marking-out.
- Dimensions: 500 m x 70 mm.

LUMBER CRAYONS

.....

A wide range of chalks to meet the many different marking needs encountered.
For marking all surfaces: metal, dry or wet wood, paper board, tiles, asphalt, plastic, etc.

.....

**WHITE
REFERENCE
421100**



**BLUE
REFERENCE
421101**



**YELLOW
REFERENCE
421102**



**RED
REFERENCE
421104**

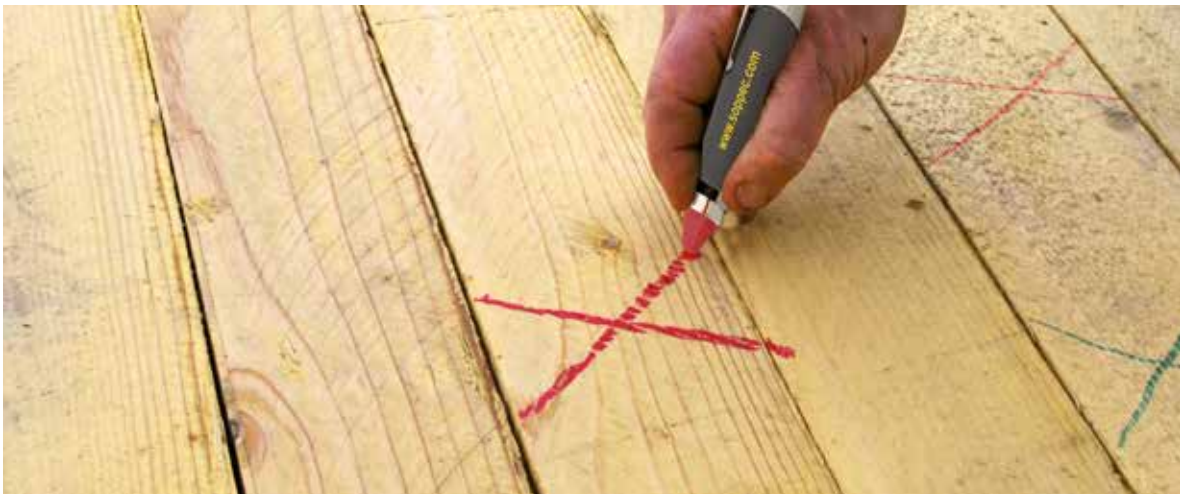


**RED
REFERENCE
421113**

FLUO



**CHALK HOLDER X3
REFERENCE
42140**



.....

PROPERTIES

.....

- Weather-resistant marking.
- Wax-based chalks.
- High visibility.
- Bold intense colors.
- Red fluorescent chalk purpose-designed for optical reading.

PAINT VALVE PEN

RÉFÉRENCE : 551603



PROPERTIES :

- High quality paint
- Wide variety of colours available
- Effective and indelible marking
- Equipped with a nylon protective cap in the same colour as the paint

SPECIFICATIONS :

Packaging

Paint capacity: 10ml/marker
Box of 12 coloured markers

Composition

Composed of a white lacquered body in extruded Aluminium with a diameter of 15mm filled with high quality paints.

The tip of the felt marking is made of long, porous 4.5mm diameter expanded polyurethane fibres to provide a line width of 2.5mm.

Application Method

Manual

There are many uses: various markings to identify machined parts, inspection, stencil or stamp painting. The paint has a high covering power allowing marking on dark surfaces.

Marking is possible on multiple substrates: wood, plastics, metals, glass, cardboard. It is not recommended on polystyrene substrates.

Recommendations for use

Shake the pump felt vigorously without removing the protective cap to ensure that the paint is evenly distributed (hear the sound of the metal balls).

Remove the cap and press the tip onto a test stand until it is well impregnated with paint.

Do not start the paint on the substrate to be treated to avoid dripping on the substrate.

Use without pressing the tip again to avoid excess paint.

Health and safety

The Safety Data Sheet can be consulted free of charge on the Internet at www.quickfds.com

AEROBITUME

A bitumen emulsion in an aerosol for use as a tack coat.
It enables optimum surface preparation and improves adhesion.
The aerosol format avoids the use of tools: brush, blade.

BLACK
143003
600ML NET



REPAIRING OR REPLACING ASPHALT SURFACES

Use as a tack coat before applying cold-lay asphalt for improved adhesion.



REPLACING CAST IRON MANHOLE COVERS

Rapid drying to provide a quick and effective finish when manhole covers need to be replaced.

PROPERTIES

- Easy to use.
- Good adhesion and fast-drying.
- Can even be used for small, difficult to reach areas.

Composition

Asphalt. Blend of aliphatic and aromatic hydrocarbons.
Propellant: specific blend of isobutane and propane.

Application method

Preferably apply to clean, dry surfaces free from grease.

Health and safety

Safety data sheets are available free of charge on the internet: www.quick-fds.com

Avoid any contact with the eyes (thoroughly rinse immediately).

Instructions for use

Use head down, apply 25 cm from the surface.

- BEFORE USE: Hold the aerosol in an upside-down position and shake vigorously to thoroughly mix the emulsion, continue even after you can clearly hear the ball bearings.
- AFTER USE: Purge head-up.

COLD-LAY ASPHALT

ENROVIT® is a cold-lay bituminous asphalt designed for repairs that need to be carried out immediately:

- Potholes.
- Trenches.
- Maintenance work to drives and garden paths, minor repairs.

Asphalt that can be stored ready-to-use, ideal for urgent repair work.

The packaging guarantees long shelf-life and immediate availability when needed.

RED I43104



BLACK I43103



PROPERTIES

- Flexible and permeable.
- Granule size: 0/4.

SPECIFICATIONS

Storage

Packaged in 25 kg buckets.
Palette of 40 buckets,
equivalent to 1,000 kg.
Store in a frost free place and
reseal to keep airtight after
use.

Composition

Cold-lay asphalt, coarse-
grained black or red, flexible
and permeable or semi-dense.
Aggregates and sands
compliant with the XP P 18-540
standard specifications.

Discontinuous grain size
grading curve:

- ENROVIT® black (0/4, 0/6*,
0/10*)
- ENROVIT® red (2/6 or 0/10)

Density: 2% void content (for
permeable types): 15 to 20 %.

Application method

1) After preparing the surface,
apply a 3 to 5 cm thick layer of
asphalt (60 kg to 80 kg/m²).
Tamp using a cylinder roller.
Curing time (elimination of
solvents): 3 weeks.

2) Clean, sweep and prepare a
square that is free from debris,
mud, etc. Apply the asphalt in
a layer 1 cm higher than the
required finished level.
Compact using a cylinder roller
or tamper by hand.

Quantity required: 60 kg to 80
kg/m² for a thickness
of 3 to 5 cm.

*For improved adhesion, apply
a bitumen spray tack coat
beforehand (see pages 34-35).*

Health and safety

Safety data sheets are available
free of charge on the internet
www.quick-fds.com.
Avoid any contact with the eyes
(thoroughly rinse immediately).

Instructions for use

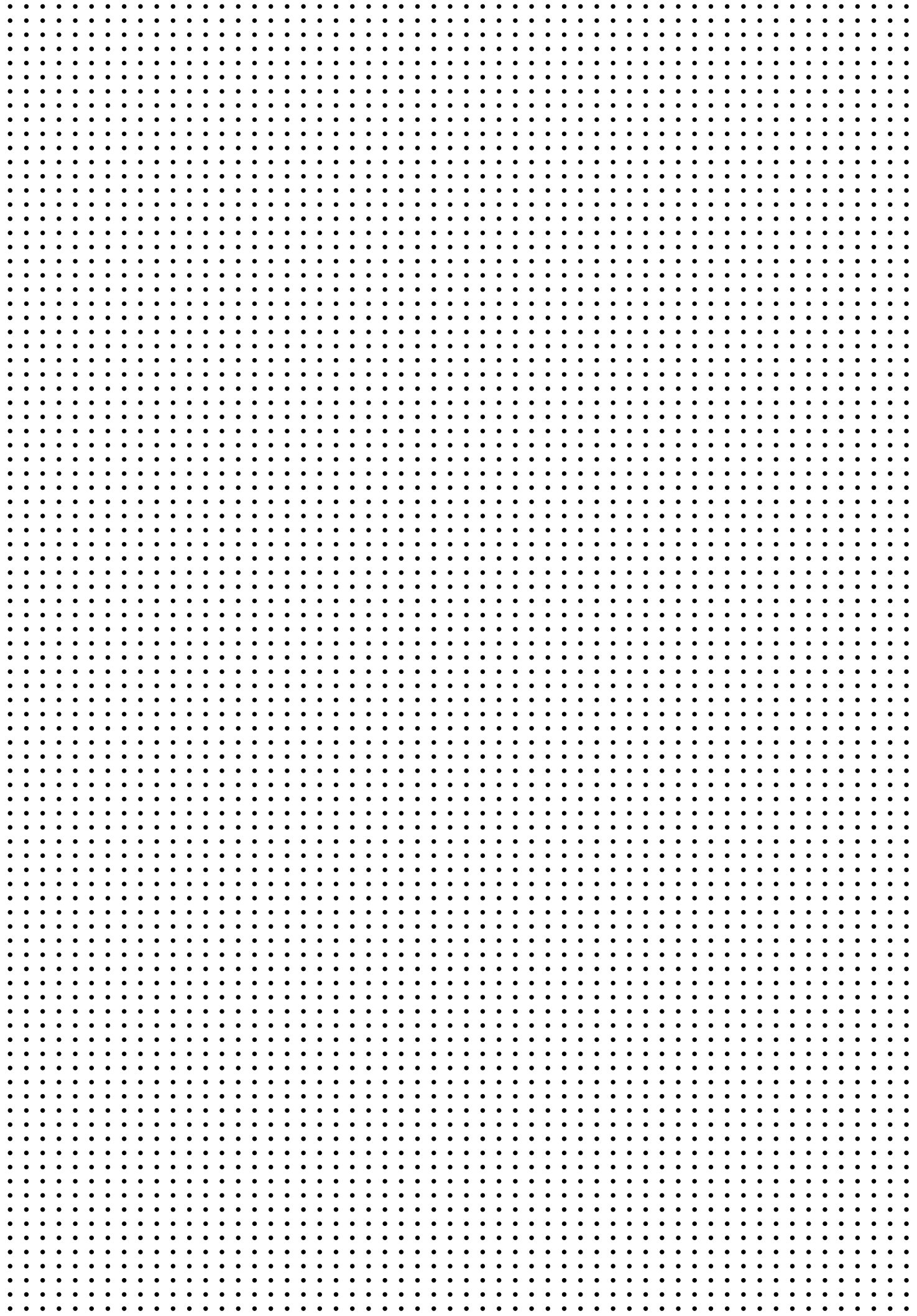
Clean prior to use with a
neutral universal detergent.

*on request



COMMON USES

PRODUCT PERFORMANCE	IDENTIFICATION OF UNDERGROUND UTILITIES	TOPOGRAPHY (MARKING OUT, SURVEYING WORK)	INFRASTRUCTURE MAINTENANCE EARTHWORKS, TRENCHES	ROAD AND HIGHWAY MAINTENANCE (EXTERNAL WORKS)	MAINTENANCE OF PROTECTED SITES	LANDSCAPING	WORKS IN TUNNELS, MINES AND SEWERS
VISIBILITY FROM AFAR	+++ / ++	+++	++	++	++	++	++
USE ON WET SURFACE	+++	+++	+++	+++	+	++	++
MARKING DURATION	+++ / ++	+++	++ / +	++ / +	+	+	++
TEMPERATURE OF USE	-15°C/40°C	-15°C/40°C	-15°C/40°C	-15°C/40°C	5°/35°C	5°/35°C	5°/35°C
PRODUCTS RECOMMENDATIONS	<ul style="list-style-type: none">• FTP• Smark• Promarker• Hydro TP	<ul style="list-style-type: none">• FTP• Hydro TP	<ul style="list-style-type: none">• FTP• Smark• Hydro TP	<ul style="list-style-type: none">• FTP• Smark• Promarker	<ul style="list-style-type: none">• Tempo TP	<ul style="list-style-type: none">• Tempo TP• Tempo Marker	<ul style="list-style-type: none">• Ideal spray
ADDITIONAL PRODUCTS	One wheel aplicator, marking chalk powder, warning tape, bitumen spray, cold-lay asphalt, protect mark						





Technima Central
Kreuzerweg 77955 Ettenheim
GERMANY
T. +49(0) 7822 789 00 10
info@technimacentral.com

Technima Nordic
Krokslätts torg 5 SE-431 37 Mölndal
SWEDEN
T. +46 (031) 102 190
info@technimanordic.com

Technima Benelux
Hambakenwetering 22A
5231 DC 's- Hertogenbosch
NETHERLANDS
T. +31 736 314 345
info@technimabenelux.com

CIA Technima SUD EUROPA
SRL- Via Santa Brigida,
43- 10060 Roletto (TO)
ITALY
T. +39 0121 542 542
ciasudeuropa@technima.com

Technima France
Z.I. 16440 NERSAC
FRANCE
Tél. +33 (0)5 45 90 93 12
Fax. +33 (0)5 45 90 58 67
technimafrance@technima.com

www.technima.com